

LMS Matters

Tel No: 01908 508678

Email address: office@longmeadow.milton-keynes.sch.uk

www.longmeadow.milton-keynes.sch.uk

Issue: 04

Date: 26.09.25



Dear Parents and Carers

Your child may have come home recently and told you that on Mondays, they move around classes. This is part of a new initiative we are trialling in school – **LMS BOOST** (Years 1 - 6). On Mondays we are supporting and extending all children in English and Maths with targeted sessions. These sessions cover key things such as **NAILING THE BASICS**, as well as plugging gaps/ extending further in specific areas. We believe that this weekly boost will allow all of our children to accelerate their progress (even further) from their individual starting point. These focused sessions are fluid and children will move each week depending on the focus. Miss Kidd and Mrs Evans have visited all of the classes to see how they are going and given whole school feedback to make them even better. You can also support us by continuing to work with your children on TTRS or using Doodle, as well as other key skills such as times tables, spelling and reading, alongside any specific things the class teacher may suggest.

Continuing with our reminders for parents/carers about how things operate at LMS, this week, **SCHOOL UNIFORM:**

- Children can wear **PREDOMINANTLY BLACK** trainers to school. Please note that this is not white trainers with some black on them.
- Summer uniform should now not be worn.
- The only item of **BRANDED LMS** uniform we require is school sweatshirt or cardigan. All other uniform can be unbranded but must be in the appropriate colour.
- Please **NAME** all uniform as we have lots of lost property.
- Each class has a **LOST PROPERTY BOX** that should be put outside of classrooms daily, plus we also have an **UNNAMED** lost property box in the school main entrance.

We have noticed recently a large number of children who are struggling to see the boards, etc. in school. Following conversations with parent/carers, we are finding that a lot of children do not have regular tests. Remember, **NHS EYE TESTS** for children under 16 are **FREE** and if your child needs glasses, you will also receive a voucher for help towards the cost. The voucher will cover the full cost of many glasses and value will vary depending upon your child's prescription. Not every child will need glasses. You or your child may not realise they have a problem with their eyes. An NHS sight test will check their eye health. An NHS sight test will tell you how well your child can see, and how healthy their eyes are. The sooner an eye problem is found, the sooner your child can get treatment and help. Some eye problems are difficult to fully correct if they are not found early. This is why taking your child for a regular check-up is important. Good eye health helps your child to learn, play, be happy and healthy. Try to get one every year if possible.

A quick reminder that we will be taking part in the sponsored **PROSTRIKE SPEED CHALLENGE** on Thursday 2nd October. Children can wear football kits or sportswear, no football boots or astro trainers please.

Don't forget to look out for the **LEARNING CONVERSATION GOOGLE FORMS** that are coming out from teachers. As ever, we will try to our best to give people one of their choices but the later you leave it to reply, the less the chance we can accommodate them

Thank you for all the donations to the **HARVEST COLLECTION**. This year, their most needed items are: **long life juice, tinned tuna, long life milk, tinned vegetables, tinned pasta, tinned fruit, tinned tomatoes, tinned rice pudding/custard and spreads like jam/peanut butter**. Thank you in advance for your support.

Finally this week, a huge well done to everyone that took part in the **TTRS TOP OF THE ROCKS**. The top 3 players at LMS were 1st Ebon, 2nd Aaryan, 3rd Georgette; out of 80 classes Thistles came 1st; out of 726 pupils Ebon came 2nd; and overall as a school LMS came 3rd - well done everyone!

Mr Gray



EYFS/KS1

Sticklebacks

who achieved

99.2%

KS2

Hogweed

who achieved

98.6%



TTROCK Stars
Weekly class champions!

KS1

Newts

KS2

Brambles



Did you also know that our **SCHOOL HALL** is available for **HIRE**? If you wish to know more about hiring it for birthdays and special occasions, please speak to the school office for further details.

DATES

FOR YOUR DIARY

School Term and Bank Holiday Dates 2025 / 2026

Term	Open morning of:	Close at the end of afternoon session of:
Autumn Term 2025	Wednesday 3 September 2025	Friday 24 October 2025
	Monday 3 November 2025	Friday 19 December 2025
Spring Term 2026	Tuesday 6 January 2026	Friday 13 February 2026
	Monday 23 February 2026	Friday 27 March 2026
Summer Term 2026	Tuesday 14 April 2026	Friday 22 May 2026
	Monday 1 June 2026	Friday 17 July 2026

Training days agreed to date: (on these days children do not come to school but staff do)

Monday 1 September 2025 / Tuesday 2 September 2025 / Monday 5 January 2026 / Monday 13 April 2026 / Monday 20 July 2026

Good Friday: Friday 3 April 2026

Easter Monday: Monday 6 April 2026

May Day: Monday 4 May 2026

Autumn Term 2025

Thursday 25 September
Monday 29 September
Thursday 2 October
Friday 3 October
w/c Monday 6 October
Thursday 9 October
Friday 10 October
Friday 10 October
Friday 10 October
Wednesday 15 October
Thursday 16 October
Thursday 16 October
Friday 17 October
Friday 17 October
w/c Monday 20 October
Monday 20 October
Wednesday 22 October
Thursday 23 October
Friday 24 October
Friday 24 October
Monday 27-Friday 31 October
Monday 3 November
Tuesday 4 November
Wednesday 5 November
w/c 10 November
Monday 10 November
Monday 10 November
Tuesday 11 November
Wednesday 12 November
Thursday 13 November
Friday 14 November
Thursday 4 December
Monday 8 December
Tuesday 9 December
Thursday 11 December
Thursday 11 December
Thursday 11 December
Friday 12 December
Monday 15 December
Tuesday 16 December
Tuesday 16 December
Wednesday 17 December
Thursday 18 December
Thursday 18 December
Friday 19 December

Year 6 Tasting Day (with parents 1-3pm)
Halloween Costumes & Christmas Jumper Sale
ProStrike
Crazy Hair Day
Year 6 Mock SATs
Year 3 Holdenby House
World Mental Health Day
Year 1-4 Reggie Dinosaur Assembly
Year 5/6 Journey Thru Space (VR Experience)
Year 5 Learning Fair
Year 4 Learning Fair
EYFS Phonics Workshop
Year 3 Diwali Day
Year 6 - Work Ready virtual bootcamp
Parent Consultations
Year 6 Hazard Alley
Year 4-6 Author Visit
Individual School Photos
Whole School Pjama Day
Break up for Half Term
HALF TERM
Autumn Term 2 Begins
Minnows Autumn Walk
Tadpoles Autumn Walk
Anti-Bullying Week
World Science Day
Snow White Theatre Production
Year 6 SATs Information Evening (Virtual 5-6pm)
Biscuits & Books (8.30am-9am)
Children in Need
Year 4 Fitzwilliam Museum
Festive Thursday (Hot Chocolate for sale after school)
Year 1/2 Carol Concert (9.15am-9.45am)
Year 1/2 Carol Concert (2.15pm-2.45pm)
Christmas Jumper Day
EYFS Christmas Performance (1.30pm)
Festive Thursday (Hot Chocolate for sale after school)
Year 6 Learning Fair
Christmas Dash
EYFS & KS1 Awards Assembly (9.10am)
Year 3/4 Awards Assembly (2.15pm)
Year 5/6 Awards Assembly (2.15pm)
Christmas Party Day
Festive Thursday (Hot Chocolate for sale after school)
Break up for Christmas Holidays

Stay & Play

Wednesday 1 October	Superheroes
Wednesday 15 October	Autumn
Wednesday 5 November	Fireworks
Wednesday 19 November	Pirates
Wednesday 3 December	Space
Wednesday 17 December	Christmas

LMS Safeguarding

Road Safety

Did you know that pedestrian accidents peak between 3–5pm, the same time as many children are walking home from school? Road safety awareness is vital, particularly as the evenings get darker.

Parents can help by encouraging children to “stop, look, listen and think” before crossing, using designated crossings wherever possible, and modelling safe behaviour themselves. Walking together is also a great way to reinforce these important habits.

LMS Well-being

How to create your own luck

The best opportunities rarely arrive on schedule. While planning has its place, the most rewarding moments in life often come disguised as interruptions, detours, and happy accidents.

By learning to recognise and seize these unexpected opportunities, we can increase our "surface area" for luck and enjoy a richer life filled with more meaningful experiences.

Here are three ways you can find connection, growth, and new possibilities through serendipity this week:

In your work

When someone mentions a challenge that reminds you of another person's expertise, play matchmaker and make the introduction. People remember who helped them find what they needed.

In your relationships

Instead of planning everything, leave room for unscripted moments - the wandering conversations, lingering after dinner, walks without a destination - and see where they lead.

For personal growth

Put yourself in the path of interesting things. Take the scenic route, strike up conversations with strangers, say yes to intriguing invitations, and step out of your comfort zone.

A Reflection question: When you encounter an unexpected event, how do you typically interpret it—do you look for meaning or opportunity?

Congratulations to our Top Doodlers...

Well done



doodle



Long Meadow Legends

Tadpoles –

Minnows –

Sticklebacks –

Frogs –

Newts –

Bracken –

Hogweed –

Foxgloves –

Hawthorn –

Ferns –

Thistles –

Brambles –

Teasels –

Sports Person of the Week

#PROUD

LONG MEADOW SCHOOL



3RD HIGHEST SCORING SCHOOL

during the MK Schools competition

MK SCHOOLS TT COMP

15.09.2025 - 19.09.2025





THE
TOMMY
FLOWERS
SCITT

TRAIN TO TEACH

Primary & Secondary



**Bursaries for EVERY tuition-fee course
ONLY with the Tommy Flowers SCITT**



Qualified Teacher Status with PGCE



Teacher Apprenticeships

Information events every month. Book online

tommyflowersscitt.co.uk

Ofsted
Outstanding
Provider





LONG MEADOW SCHOOL PRESENTS

Stay and Play Sessions



Run by the school's Deputy and Assistant Heads
Different theme each session

Autumn Term 2025

- MESSY PLAY
- CREATIVE TABLES
- IMAGINATIVE PLAY
- SENSORY ACTIVITIES
- READING AREA
- REFRESHMENTS INCLUDED

Only
£1 pp

17th September - Safari
1st October - Superheroes
5th November - Fireworks
19th November - Pirates
3rd December - Space
17th December - Christmas

CONTACT US FOR
MORE INFO

01908 508678

office@longmeadow.milton-keynes.sch.uk



FOR UNDER 5S

9am - 10:30am





Nurture

Christ the Cornerstone Church

Wednesdays 16:30 –19:00

1st Oct – 10th Dec

We will be holding an open evening on the 24th Sept from 16:30-19:00

*Where you can pop in and meet us , ask any questions you may have, see the resources and enjoy a cuppa. *Please note if you are unable to attend on the 24th you are still be able to sign up for the course.*

Children are rewarding, stimulating and fun, but looking after them can be stressful and challenging!

These 10 sessions fit together like a puzzle to help deal with the challenges so you can have a calmer, happier life.

The nurture programme created by the Centre for Emotional Health uses these four building blocks of emotionally healthy relationships.

- Self-awareness
- Appropriate expectations
- Empathy
- Positive discipline



Please scan the QR code or email nicola.skelton@milton-keynes.gov.uk to sign up



**TICKETS
AVAILABLE
NOW!**

**AMAZING
LEGO DISPLAYS**

**NEW & RETIRED
LEGO SETS**

**BUILD
CHALLENGES**

**ACTIVITIES
FOR ALL AGES**

**CHARITY
TOMBOLA**

**MILLIONS OF
LOOSE BRICKS**

**PLUS SO
MUCH MORE!!**



**MILTON KEYNES
BRICKFESTIVAL.COM**


**19TH OCT 2025
CENTRE:MK**

MORE LEGO THAN YOU CAN DREAM OF

**MILTON KEYNES
BRICK
FESTIVAL**



Follow us on facebook:

Sunshine Family Centre, Merebrook Infant School, Furzton, MK4 1EZ. Tel: 01908 508566				
Monday	Tuesday	Wednesday	Thursday	Friday
10:00-11:00 Story, Songs and Rhymes Join the Sunshine team at Westcroft Library	10:00-11:30 Stay and Play A play session for under 5's with indoor and outdoor play. Includes a healthy snack and songs and rhymes.	10:00-11:00 Messy Play Lots of opportunities to join in with sensory and creative play. A change of clothes is advised.	9.30-10.45 Baby Group A relaxed session including songs and rhymes. From newborn to non-walkers. 11:15-12:00 Soccatots Fun free football session for walkers to 4 years.	9.30-10.30 Walk Join us for a walk to the local parks 10:30-12:00 Drop in Café Hot drinks and snacks available. Everyone welcome!
10:00-12:00 ESOL English course for speakers of other languages. Run by MK College Contact the centre to book.	12:00-1:00 Lunch Club Join us for a free lunch! Please contact the centre to book. Everyone welcome!	1:00-2:00 Join the Sunshine team for Story, Songs and Rhymes at The Hive, Whitehouse.	10:00-1:00 Citizen's Advice Fortnightly appointments. Book at: Shenley Brook End Parish Council - Citizens Advice Milton Keynes (miltonkeynescab.org.uk)	10:00-12:00 Music Bugs Contact michelle@musicbugs.co.uk to book.
Community Larder at The Hive Community Centre, Whitehouse and our new Café Supported by Sunshine 2:00-4:00 More info at: www.sofea.uk.com Help reduce food waste	Parenting courses Nurture Workshop & LIPS course (speech and language) Contact the centre for more information.	YMCA Youth Club At Sunshine 3:30-5:30 11-13 years. 6:30-8:30 14-18 years.	12:30-2:30 Creative Play: music and song peri-natal mental health session for mums in Milton Keynes. Scan for details 	Sensory room available Monday and Friday 9:00-3:00 Contact the centre to book

For families who live in Furzton, Emerson Valley, Shenley Lodge, Shenley Church End, Shenley Wood, Tattenhoe, Tattenhoe Park, Loughton and Loughton Lodge, Crownhill, Kingsmead, Whitehouse, Grange Farm, Oxley Park, Westcroft, Oakhill and Medbourne.



CRICKET COACHING MASTERCLASS

Learn from the pros and take your game to the next level

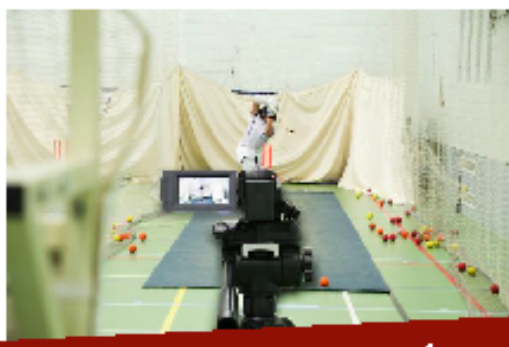
Andy O'Connor, Nick Broome, Brenden Fourie, Graeme White &
David Ripley (All Level III or IV with First Class Playing Experience)



Specialist 121 & Net Coaching

20th – 24th, 27th & 29th– 31st October.

Stowe School. Sessions from from £55 each



All abilities catered for – beginners to experts. For more information and
to book, please email Info@cricketcoachingmasterclass.co.uk

www.cricketcoachingmasterclass.co.uk

Proudly

Supported by

Quickscore



sporta
tours

Cricket Coaching



And Natural loose parts such as:

Branches and sticks

Fruit trees

Grass Plants

Leaves

Logs

Mud

Pea gravel

Peat

Pinecones

Play bark/woodchip

Sand (washed dredged not 'sharp')

Sea pebbles

Shells

Varied aggregates, slate, flint, clay

Wood off-cuts

If you have or can help with any of these, please put them in the **OPAL DONATION STATION** in the main foyer, or speak to the school office.

Fabricated loose parts e.g.

Astro turf off-cuts

Boards, old cabinet doors, panels

Bread, milk, bottle and grocery crates

Briefcases

Buggies, pushchairs

Cable drums

Carpet samples/squares

Fabrics – all shapes and sizes

Foam pipe covers and noodles

Guttering

Hoses

Keyboards

Metal pots, pans, trays etc, especially catering sizes

Nets: fishing, cargo, football

Office removal crates, tea Crates

Old clothes, jackets, overalls, hats, bags

Old household appliances, hoovers, fax machines, microwaves, etc.

One-ton dumpy bags

Pallets

Phones

Piping, gas, water and drainage

Planks – decking

Plastic road barriers

Small wheelie bins

Steering wheels

Suitcases

Tarps

Traffic Cones

Tubes of all kinds

Wooden block and off-cuts Carpenters, builders

