

# LMS Matters

Tel No: 01908 508678

Email address: [office@longmeadow.milton-keynes.sch.uk](mailto:office@longmeadow.milton-keynes.sch.uk)

[www.longmeadow.milton-keynes.sch.uk](http://www.longmeadow.milton-keynes.sch.uk)

Issue: 01

Date: 05.09.25



Dear Parents and Carers

First a warm welcome to all of our families old and new! Its great to be back and as ever it's lovely seeing everyone happy and smiling. We are so **#PROUD** of our school and we are honoured for all our new starters to become part of our LMS family. We know you will be happy here.

Yesterday saw our **MEET THE TEACHER** meetings after school. We hope you found them useful, got lots of information and asked any questions you may have had. If you were unable to attend for any reason, the presentations that were shared should be appearing on the school website ([www.https://longmeadow.milton-keynes.sch.uk/](http://www.https://longmeadow.milton-keynes.sch.uk/)) at some point next week – keep an eye out!

Whilst school may have been closed to children, it has been a hive of activity this summer. You may have seen some vehicles and fencing on site. This is due to us having brand new boilers and a new heating system fitted whilst no children were around. This work unfortunately has overrun, but we hope it will be finished in time for when we may actually need it on. We also had a huge IT upgrade, with the Computing Suite and classrooms getting a PC upgrade. We value the role Computing plays in education and want it to be the best it can for our children and staff.

Our **OPAL** journey has been paused this week whilst we welcome the new EYFS children to school and let them settle. As per my email, from Monday we are back, but your children will need a change of shoes/wellies to access some of it. Each day we will decide if they need them on at lunch or not (with our new, sparkly welly system). If you are struggling to find a pair, we have a huge amount of donated stock, so just pop into the office and we can sort you out!

As part of our fundraising, we start next week with a **LOOSE COINS CHALLENGE** on **Wednesday 10th September**. You would have received a flyer and one can be seen on classroom doors. Children will bring in coins next Wednesday morning and, in the afternoon, each class will go out to the playground and make a line of their class' coins on there. All children will help make the line, irrespective of whether they brought coins in or not. The winning line of coins per playground will win a half hour extra play. With money extremely tight this year, we hope that you will be able to support this in any way you can.

Also, please start saving your **SECOND HAND HALLOWEEN COSTUMES** and **CHRISTMAS JUMPERS** for our sale on the 29th September – more information to follow.

The **BLUE LIGHT HUB** in Milton Keynes are holding another open day on Sunday 7th September from 11am-3pm. This will be a fun and educational day for children of all ages. It will include Emergency Service Scenario Demos, Fire Safety and Wellbeing information and a chance to look around Emergency Service Vehicles. There will be refreshments, music and activities for all - including a raffle! All proceeds raised will go to The Fire Fighters Charity, The South Central Ambulance Charity and the Curtis Palmer Programme.

The **SUNSHINE FAMILY CENTRE** provides a wide range of activities and services for parents/carers and families of children aged 0-18 years. The areas covered are: Crownhill, Emerson Valley, Furzton, Grange Farm, Hazeley, Kingsmead, Knowlhill, Loughton, Loughton Lodge, Medbourne, Oakhill, Oxley Park, Shenley Brook End, Shenley Church End, Shenley Lodge, Shenley Wood, Tattenhoe, Tattenhoe Park, The Bowl, Westcroft, Whitehouse and Woodhill. Have a look further on at their latest timetable to see the activities they have running everyday!

Finally this week, as ever we will be having a huge focus on **ATTENDANCE** this year, ensuring all of our children are here, every day, on time and ready to learn. We will be send out an attendance special over the coming weeks but, as a starter, here is some **DATA** linked to attendance;

- Pupils with higher attainment at KS2 had lower levels of absence over the key stage compared to those with lower attainment.
- Among pupils with no missed sessions over KS2, 83.9% achieved the expected standard compared to 40.2% of pupils who were persistently absent.
- Generally, the higher the percentage of sessions missed across the key stage at KS2, the lower the level of attainment at the end of the key stage.

We hope you have all had a great start to the year and I look forward to seeing you all for our first full week back next week.

Mr Gray



**EYFS/KS1**

**Sticklebacks**

who achieved

**95.5%**

**KS2**

**Brambles**

who achieved

**100%**



**TTROCK Stars**

Weekly class champions!

**KS1**

**Will start again soon**

**KS2**

**Will start again soon**



Did you also know that our **SCHOOL HALL** is available for **HIRE**? If you wish to know more about hiring it for birthdays and special occasions, please speak to the school office for further details.

## **SCHOOL TERM AND BANK HOLIDAY DATES 2025/26**

<b>Term</b>	<b>Open morning of:</b>	<b>Close at the end of afternoon session of:</b>
Autumn Term 2025	Wednesday 3 September 2025	Friday 24 October 2025
	Monday 3 November 2025	Friday 19 December 2025
Spring Term 2026	Tuesday 6 January 2026	Friday 13 February 2026
	Monday 23 February 2026	Friday 27 March 2026
Summer Term 2026	Tuesday 14 April 2026	Friday 22 May 2026
	Monday 1 June 2026	Friday 17 July 2026

Training days agreed to date: (on these days children do not come to school but staff do)

Monday 1 September 2025

Tuesday 2 September 2025

Monday 5 January 2026

Monday 13 April 2026

Monday 20 July 2026

**Good Friday**

**Friday 3 April 2026**

**Easter Monday**

**Monday 6 April 2026**

**May Day Bank Holiday**

**Monday 4 May 2026**

## LMS Safeguarding

### Child Protection Statistics 2025 - NSPCC

Data is the driver of decision making, without which situational analysis cannot take place. In the United Kingdom, child protection plans are issued to children who may be at risk of significant harm.

The data sets produced by variables such as plan outcomes of their imposition conditions, their duration and other such attributes, are indispensable to educational professionals. The NSPCC has released its 2025 statistics starting at the end of last year. Each dataset lays out the number of children who are subject to CPPs, the reasons they're subject to CPPs and demographic data. If interested, please follow the link below:

<https://learning.nspcc.org.uk/research-resources/child-protection-plan-register-statistics>

## LMS Well-being

***“It’s up to you today to start making healthy choices. Not choices that are just healthy for your body, but healthy for your mind.” – Steve Maraboli***

Many factors contribute to our wellbeing, but the underlying foundations are undoubtedly the ‘holy trinity’ of health: diet, exercise, and rest. And we should ensure these three elements are dialed in before focusing on anything else.

Bonus points if you link them to your values and/or a bigger goal. That may be developing your kitchen skills by learning to cook new, healthy meals, training for a marathon, building social connections through group activities, or recharging by exploring the world and connecting with nature through outdoor retreats.

As well as addressing the three pillars of health, such carefully chosen actions serve double duty by helping cultivate positive emotions, healthy relationships, and a sense of meaning and accomplishment—all of which further enhance your wellbeing.

“How would you rate your overall physical health on a scale of 1-10? What factors contribute to that rating?” This scaling question is excellent for establishing where you currently are with the most crucial aspect of your wellbeing. You can then dig into any specific factors pulling this score down and create potential actions for improving yourself!

# Congratulations to our Top Doodlers...

Aarav P & Nyla A for their 50 day English streaks; Ewan M for his 50 day maths streak; Ivy A for her 100 day maths streak; Ivy A & Milly C for their 100 day English streaks; Parker W, Zayn A, Yilmaz M, Yusuf R, Lacey W, Zain R & Wayne T for their 250 day English streaks; Zayn A, Yilmaz M, Yusuf R, Simeon O & Zain R for their 250 day maths streaks; Ivy M & Mollie R for their 365 maths streaks; Cole E for his 365 English streak; Cole E & Aakesh R for their 500 day maths streaks; Naomi R for her 750 day English streak and Dominic L for his 750 day English streak!

Well done



**doodle**



## Long Meadow Legends

**Sticklebacks** – Anirudh for his fabulous first week at Long Meadow School.

**Frogs** – Tyler for outstanding LMS behaviours all week.

**Newts** – Ahmet for showing beautiful manners & challenging himself this week.

**Bracken** – Eva for showing great initiative in class.

**Hogweed** – Cole for showing amazing work ethic and independence.

**Foxgloves** – Cohen for being a wonderfully supportive partner.

**Hawthorn** – Lok for listening carefully all week and following all expectations.

**Ferns** – Jessica for settling into Ferns so well – she has shown confidence & resilience and has smiled lots in these first few days back.

**Thistles** – Ebun for showing resilience when faced with a challenge.

**Brambles** – Zoe for being lovely & kind, I am already impressed with how she takes responsibility for the classroom – a role model already.

**Teasels** – Violet for a brilliant start to Year 6! Keeping cool, calm & collected when tackling all tasks.

**Start saving your second hand Halloween costumes and Christmas jumpers for our sale on 29<sup>th</sup> September. More information to follow!**



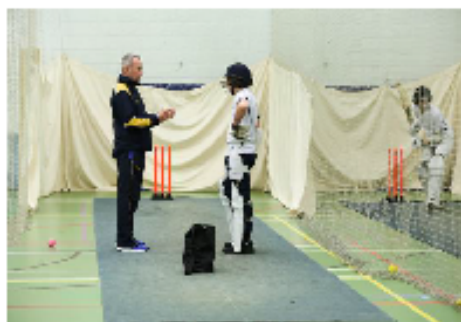




# CRICKET COACHING MASTERCLASS

Learn from the pros and take your game to the next level

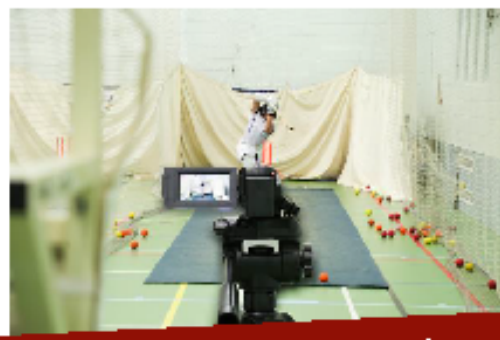
Andy O'Connor, Nick Broome, Brenden Fourie, Graeme White &  
David Ripley (All Level III or IV with First Class Playing Experience)



## Specialist 121 & Net Coaching

20<sup>th</sup> – 24<sup>th</sup>, 27<sup>th</sup> & 29<sup>th</sup> - 31<sup>st</sup> October.

Stowe School. Sessions from from £55 each



All abilities catered for – beginners to experts. For more information and  
to book, please email [Info@cricketcoachingmasterclass.co.uk](mailto:Info@cricketcoachingmasterclass.co.uk)

[www.cricketcoachingmasterclass.co.uk](http://www.cricketcoachingmasterclass.co.uk) Proudly  
Supported by


Quickscore



sporta  
tours

Cricket Coaching



Sunshine Family Centre, Merebrook Infant School, Furzton, MK4 1EZ. Tel: 01908 508566				
Monday	Tuesday	Wednesday	Thursday	Friday
<b>10:00-11:00</b> <b>Story, Songs and Rhymes</b> Join the Sunshine team at Westcroft Library	<b>10:00-11:30</b> <b>Stay and Play</b> A play session for under 5's with indoor and outdoor play. Includes a healthy snack and songs and rhymes.	<b>10:00-11:00</b> <b>Messy Play</b> Lots of opportunities to join in with sensory and creative play. A change of clothes is advised.	<b>9.30-10.45</b> <b>Baby Group</b> A relaxed session including songs and rhymes. From newborn to non-walkers.  <b>11:15-12:00</b> <b>Socatotots</b> Fun free football session for walkers to 4 years.	<b>9.30-10.30</b> <b>Walk</b> Join us for a walk to the local parks  <b>10:30-12:00</b> <b>Drop in Café</b> Hot drinks and snacks available. Everyone welcome!
<b>10:00-12:00</b> <b>ESOL</b> English course for speakers of other languages. <b>Run by MK College</b> Contact the centre to book.	<b>12:00-1:00</b> <b>Lunch Club</b> Join us for a free lunch! Please contact the centre to book. Everyone welcome!	<b>1:00-2:00</b> Join the Sunshine team for <b>Story, Songs and Rhymes</b> at The Hive, Whitehouse.	<b>10:00-1:00</b> <b>Citizen's Advice</b> Fortnightly appointments. Book at: Shenley Brook End Parish Council - <a href="mailto:CitizensAdviceMiltonKeynes@miltonkeynescab.org.uk">Citizens Advice Milton Keynes (miltonkeynescab.org.uk)</a>	<b>10:00-12:00</b> <b>Music Bugs</b> Contact <a href="mailto:michelle@musicbugs.co.uk">michelle@musicbugs.co.uk</a> to book.
<b>Community Larder</b> at The Hive Community Centre, Whitehouse and our new Café Supported by Sunshine <b>2:00-4:00</b> <b>More info at:</b> <a href="http://www.sofea.uk.com">www.sofea.uk.com</a> Help reduce food waste	<b>Parenting courses</b> <b>Nurture Workshop</b> <b>&amp; LIPS course (speech and language)</b> Contact the centre for more information.	<b>YMCA Youth Club</b> <b>At Sunshine</b> <b>3:30-5:30</b> 11-13 years. <b>6:30-8:30</b> 14-18 years.	<b>12:30-2:30</b> <b>Creative Play: music and song</b> <b>peri-natal mental health session for mums in Milton Keynes.</b> Scan for details 	<b>Sensory room available Monday and Friday</b> <b>9:00-3:00</b> Contact the centre to book

For families who live in Furzton, Emerson Valley, Shenley Lodge, Shenley Church End, Shenley Wood, Tattenhoe, Tattenhoe Park, Loughton and Loughton Lodge, Crownhill, Kingsmead, Whitehouse, Grange Farm, Oxley Park, Westcroft, Oakhill and Medbourne.



Fabricated loose parts e.g.

Astro turf off-cuts

Boards, old cabinet doors, panels

Bread, milk, bottle and grocery crates

Briefcases

Buggies, pushchairs

Cable drums

Carpet samples/squares

Fabrics – all shapes and sizes

Foam pipe covers and noodles

Guttering

Hoses

Keyboards

Metal pots, pans, trays etc, especially catering sizes

Nets: fishing, cargo, football

Office removal crates, tea Crates

Old clothes, jackets, overalls, hats, bags

Old household appliances, hoovers, fax machines, microwaves, etc.

One-ton dumpy bags

Pallets

Phones

Piping, gas, water and drainage

Planks – decking

Plastic road barriers

Small wheelie bins

Steering wheels

Suitcases

Tarps

Traffic Cones

Tubes of all kinds

Wooden block and off-cuts Carpenters, builders





And Natural loose parts such as:

Branches and sticks

Fruit trees

Grass Plants

Leaves

Logs

Mud

Pea gravel

Peat

Pinecones

Play bark/woodchip

Sand (washed dredged not 'sharp')

Sea pebbles

Shells

Varied aggregates, slate, flint, clay

Wood off-cuts

If you have or can help with any of these, please put them in the **OPAL DONATION STATION** in the main foyer, or speak to the school office.