

# LMS Matters

Tel No: 01908 508678

Email address: office@longmeadow.milton-keynes.sch.uk

www.longmeadow.milton-keynes.sch.uk

Issue: 33

Date: 27.06.25



Dear Parents and Carers

Recently I emailed parents and carers about the huge amount of waste I have witnessed in the dining room with regards to school lunches. A huge thank you to the parents and carers who have emailed in after speaking with their children; I thought it would be prudent to give an overview of some of the things that were mentioned to me: **Quality and preparation of the food** - I have passed this on to our caterers. I myself see no obvious signs of poor quality and can guarantee the proportion from our current provider is both safe and of a high standard. **Dishes being different to what they are used to** - I can see why children may think this, but this would be the same at any restaurant or food outlet. I have however passed this on. **Move away from the pre-order system** - Unfortunately this would incur firstly more waste and secondly, a large amount of children would not get something they liked. The pre-order system ensures that at least the children are guaranteed to get their choice. **Friends eating quickly or not as much food in lunchbox** - I ran an assembly on this last week and spoke to the children about our lunchtimes being a social time too and that children can sit and talk to their friends, wait for all to finish and leave. This is of course a huge compliment however that the children want to get outside to enjoy their OPAL lunchtimes as much as they can. **Not enough of the food they like (or not enough of certain things like beans and cheese on baked potatoes)** - The weekly food menus are nutritionally balanced across a whole week and unfortunately, if they always provided the food that children 'enjoy', this would mean that the meals were not balanced and could lead to health problems. With regards to the amounts, I have passed this on to our caterers. **The hall is noisy and messy** - The hall has exactly the same amount of children in it, the noise comes from the social aspect where children are sitting with who they wish to and are talking to each other. We have tried playing music but this just added more noise. With regards to mess, I spoke with all the children about what to do if they find a messy table, etc..

Later today, you will all receive the **NEW CLASSES** for next year. The biggest change for us is that we will be mixing classes in Years 1 and 2 (all is explained in the letter). On Monday, we will be holding our **TRANSITION DAY**. Your child's new teachers and staff will spend the day building relationships with the children and learning more about each other, as well as setting out expectations and having fun!

- Children should enter school on that morning through the cloakroom for their new year group.
- They will leave through their new classroom door at the end of the day (the doors will be labelled).
- Drop off and pick up times are as normal.

The **WEATHER** looks like it will peak again next week. As part of this, please can parents/carers ensure that water bottles go home, are washed and come back to school. The reason I say this is that the warmer temperatures have encouraged **MOULD GROWTH** in unwashed bottles.

**LEON LEISURE CENTRE** are running a summer swimming program this year, this is suitable for beginner swimmers Stage 1 to 5 and are **FAST TRACK**. See the flyer further on if you are interested and to get booked in.

Tomorrow sees the **SCHOOL FETE** taking place. This is our biggest fundraising event of the year and every penny counts for us – please come along and support it if you can – you can even throw sponges at me in the stocks! There is lots going on with more information available [HERE](#). A big part of the day will be the **PALMS RAFFLE** which has some amazing prizes on offer. If you want to buy tickets you can do so online at <https://pta.events/SummerRaffle25>.

Don't forget that next Friday sees the annual **FOOD FAYRE** taking place in the school hall from 3.15pm–4.45pm; this is a **CASH ONLY** event so please try to bring change! We look forward to seeing you all there.

See you all tomorrow.

Mr Gray



**EYFS/KS1**

**Pondskaters**

**Sticklebacks**

**Frogs**

**who achieved**

**100%**

**KS2**

**Hogweed**

**who achieved**

**99.6%**



**TTROCK Stars**

**Weekly class champions!**

**KS1**

**Frogs**

**KS2**

**Bracken**



Did you also know that our **SCHOOL HALL** is available for **HIRE**? If you wish to know more about hiring it for birthdays and special occasions, please speak to the school office for further details.

# D A T E S

## FOR YOUR DIARY

### School Term and Bank Holiday Dates 2024 / 2025

Term	Open morning of:	Close at the end of afternoon session of:
Autumn Term 2024	Thursday 5 September 2024	Friday 25 October 2024
	Monday 4 November 2024	Friday 20 December 2024
Spring Term 2025	Tuesday 7 January 2025	Friday 14 February 2025
	Monday 24 February 2025	Thursday 3 April 2025
Summer Term 2025	Tuesday 22 April 2025	Friday 23 May 2025
	Monday 2 June 2025	Tuesday 22 July 2025

Training days agreed to date: (on these days children do not come to school but staff do)

Tuesday 3 September 2024 / Wednesday 4 September 2024 / Monday 6 January 2025 / Friday 4 April 2025 / Wednesday 23 July 2025

Good Friday: Friday 18 April 2025

Easter Monday: Monday 21 April 2025

May Day: Monday 5 May 2025

### Summer Term 2025

Friday 20 June	PALMS Non Uniform Day
Monday 23 June	Year 6 Residential - Swanage
Monday 23 June	RWI Development Day
Saturday 28 June	PALMS School Fete
Monday 30 June	Transition Day
Friday 4 July	Food Fair
Tuesday 8 July	KS1 & EYFS Sports Day
Wednesday 9 July	KS2 Sports Day
Thursday 10 July	Year 2 Pirate Day
Friday 11 July	Year 6 Performance to KS2 & siblings (9.30am)
Friday 11 July	Year 3 Learning Fair (2.15pm Hall)
Friday 11 July	PALMS Frosty Friday
Monday 14 July	Year 6 Performance to parents (6pm—drop off at 5.30pm)
Tuesday 15 July	EYFS & KS1 Awards Assembly (9.10-10.10am Hall)
Tuesday 15 July	Year 6 Performance to parents (1.45pm)
Wednesday 16 July	Year 3 & 4 Awards Assembly (9.10-10.10am Hall)
Wednesday 16 July	Year 5 & 6 Awards Assembly (2.15-3.15pm Hall)
Wednesday 16 July	Year 6 Leavers' Disco (6-8pm)
Friday 18 July	PALMS Frosty Friday
Tuesday 22 July	Year 6 Leavers' Assembly (9am)
Tuesday 22 July	Last Day of Term

#### Stay & Play Dates

Wednesday 2 July Sports

## LMS Safeguarding

### The Hidden Dangers of scanning QR Codes - Action Fraud and Sky News

Cyber criminals are increasingly exploiting QR technology to direct people to malicious websites designed to steal people's personal and financial information.

QR codes have become a convenient part of everyday life—but they also carry hidden risks. A recent Sky News investigation revealed that organised crime groups are using QR code stickers across UK streets, including near schools, to promote illegal online cannabis delivery services. These links lead to slick websites offering next-day delivery, with transactions handled through banks and cryptocurrency. The products are often unregulated and potentially dangerous.

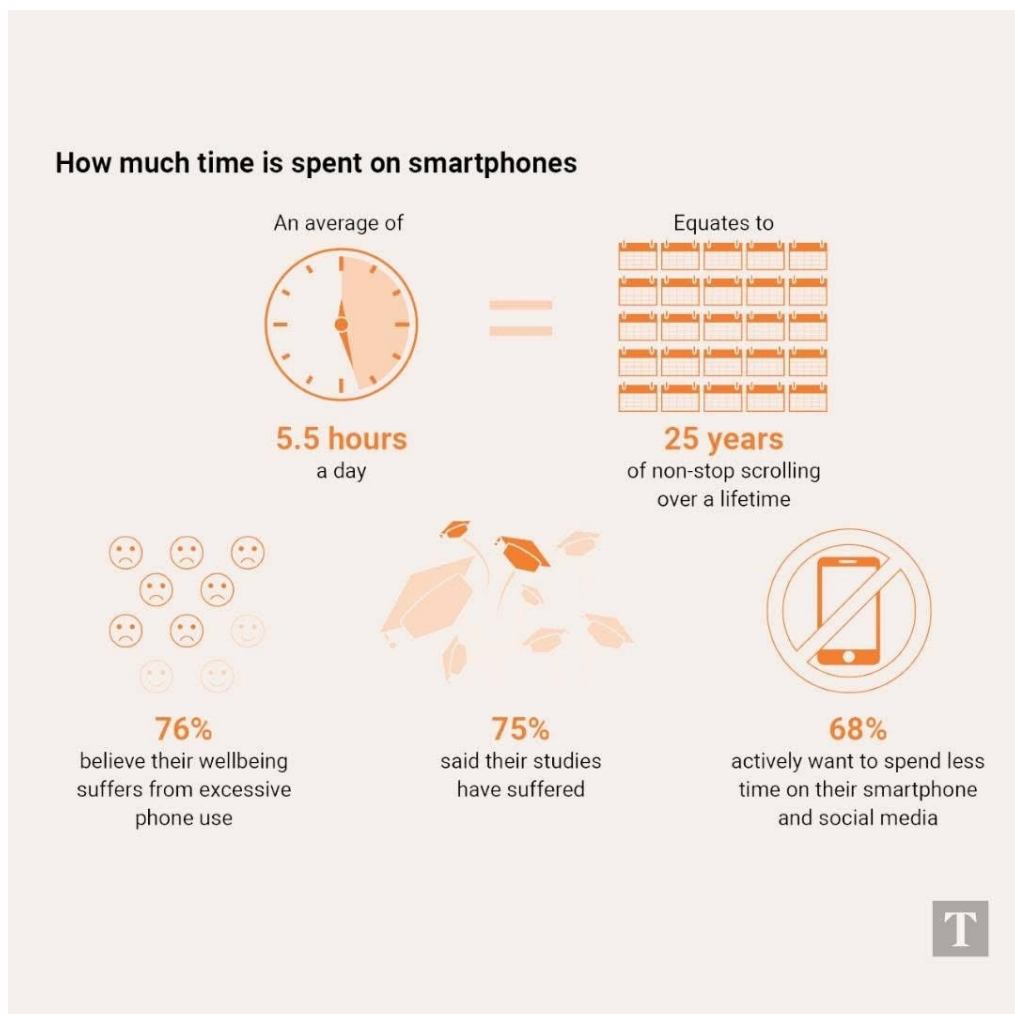
<https://news.sky.com/story/the-online-drug-trade-behind-qr-code-stickers-plastered-on-streets-across-the-uk-13365660>

Meanwhile, Action Fraud warns that criminals are also using fake QR codes to trick people into giving away personal or financial information. Some replace legitimate QR codes in car parks with scam versions, while others send malicious codes via email in phishing attacks known as 'quishing'.

To stay safe, only scan QR codes from trusted sources, avoid using third-party scanning apps, and double-check links before following them. Suspicious QR code activity should be reported to Action Fraud at <https://www.actionfraud.police.uk/a-z-of-fraud/qr-codes>.

## LMS Well-being

**The research below is related to anyone in school, college or university... what does this tell you?**



# Congratulations to our Top Doodlers...

Edith R for her 50 day maths  
streak and Giulia M for her 50  
day English streak.

Well done



doodle



## Long Meadow Legends

**Tadpoles** – Atenea for being Subitiser of the Week and Tara for being an all-round superstar!

**Minnows** – Esmae for being a subitising superstar!

**Pondskaters** – Thomas for writing a great story and Sadie & Milena for showing resilience and working on their confidence.

**Sticklebacks** – Noah for improving his reading.

**Frogs** – Sienna for her wonderful positive attitude to all her learning.

**Newts** – Coby for being kind, helpful & showing great confidence in DT.

**Bracken** – Arjun for improvement in handwriting.

**Hogweed** – Madison for the outstanding work she has accomplished this term in English.

**Foxgloves** – Josh for working really hard in English & correctly adding punctuation to his sentences.

**Hawthorn** – Evie-Grace for being a super reader; improving lots and trying to answer lots of questions about our texts.

**Ferns** – Alec for absolutely amazing results in his Year 5 end of year mocks!

**Thistles** – Felicia for always being a kind, mature & helpful member of our class.

**Brambles** – Tommy for taking part in all the activities on our residential with joy & enthusiasm, especially playing in the sea!

**Teasels** – Emily A for overcoming barriers whilst away on residential.

Sports Person of the Week

#PROUD

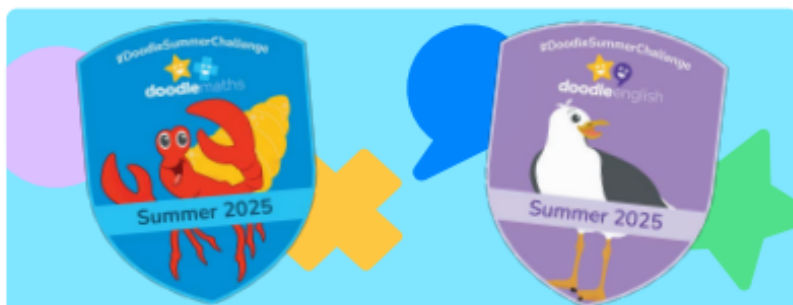


# The Doodle Summer Challenge

1st of July - 31st of August 2025

## Earn a pin badge and certificate!

Between the **1st of July - 31st of August**, Doodle are running two exciting beach-themed Summer Challenges — the DoodleMaths Challenge and the DoodleEnglish Challenge!



Both Challenges are designed to encourage a few minutes of daily Doodling, keeping your child engaged in their learning and boosting their skills. Plus, they can **earn exclusive rewards** by taking part!

## How to take part

### 1 Create or link your account

If you haven't already, create and/or link a parent account to your child's school account. To find out how to do this, see the reverse of this flyer or visit [help.doodlelearning.com](https://help.doodlelearning.com) and search '[how to link account](#)'.

### 2 Register for the Challenge

From the **1st of July**, visit [parents.doodlelearning.com](https://parents.doodlelearning.com) and press Register next to your child's name for one of both Challenges.\* **The last day to register for and begin the Challenge is the 18th of August.**

### 3 Doodle 'little and often'

Once you've registered, encourage your child to **earn 750 stars** (or 600 if they were born after August 2017) **and use DoodleMaths and/or DoodleEnglish for 14 days\*** between the 1st of July – 31st of August.

\*These 14 days don't need to be in a row. A day of use is defined as completing at least one exercise between 00:01 and 23:59.

### 4 Receive a pin badge and certificate!

Once they've reached their target, we'll send a **pin badge to their school** after the Challenge comes to an end. You can also claim a **personalised certificate** for them by visiting [parents.doodlelearning.com](https://parents.doodlelearning.com) and pressing **Download certificate** before midnight on the 26th of September.



Tag us and use the hashtag  
**#DoodleSummerChallenge**

For more information,  
please visit [doodlelearning.com/challenge](https://doodlelearning.com/challenge).

Any questions? Visit [help.doodlelearning.com](https://help.doodlelearning.com) and press on the green circle icon to chat to our team.



## 2025 MILTON KEYNES SUMMER CAMPS FOR 5-12 YEAR OLDS GIRLS & BOYS OF ALL ABILITY



**CAMP 1: TUE 29JUL25 - THU 31JUL25**

**CAMP 2: TUE 05AUG25 - THU 07AUG25**



**BOOK ONLINE TO RESERVE YOUR SPACE**



**Suitable for children  
of all abilities**



**Fun individual and team  
challenges and games**



**1V1 and team tournament  
on Thursday**



### Timings

Tuesday, Wednesday & Thursday  
10am - 3pm (half day options available)  
9:45am drop off and 3pm collection

### Address

Caroline Haslett Primary School  
Faraday Drive  
Shenley Lodge  
Milton Keynes - MK5 7DF

### Price options

£25 - Half day (morning or afternoon)  
£40 - Single day  
£90 - Full 3 day camp

**Please contact the team for more details**



[russell@wemakefootballers.com](mailto:russell@wemakefootballers.com)



01908 011 442



[www.wemakefootballers.com/milton-keynes/holiday-camps](http://www.wemakefootballers.com/milton-keynes/holiday-camps)







# FAST TRACK LESSONS

Book in for 1, 2 or 3 weeks!

Monday 28th July – Friday 1st August (5 days)  
Monday 4th August – Friday 8th August (5 days)  
Tuesday 26th August – Friday 29th August (4 days)

Classes available between 9.30am – 12pm

## PROGRAM FEATURES:

- ✓ Suitable for beginners and swimmers stage 1 to stage 5
- ✓ Improve stroke weaknesses and skills
- ✓ Build confidence and stamina in the water

**DROP US AN EMAIL OR GIVE US A CALL  
TO BOOK IN**

01908 624725  
[swimbookings@shlacademy.org](mailto:swimbookings@shlacademy.org)

£30 for 5 day  
courses

£24 for the 4  
day course

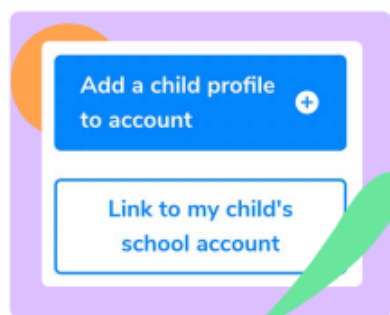
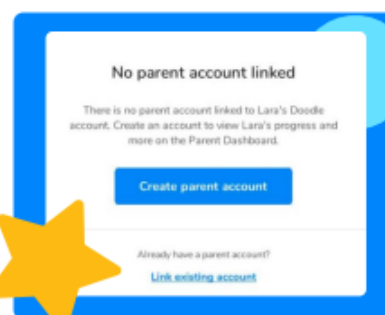


## How to create and/or link a parent account to your child's school account

Creating a parent account is really important (and really easy!). By doing this, you'll be able to enter the Summer Challenge and claim your child's personalised certificate by visiting [parents.doodlelearning.com](https://parents.doodlelearning.com), our online parent hub.

## How to create and/or link a parent account via the Doodle apps

- 1 Log in to any of the Doodle apps using the username and password provided by your child's school. **If you're not sure what these are, please contact your child's school rather than creating a new account for them.**
- 2 From the Learning Zone, click on the arrow icon in the top left-hand corner of the screen
- 3 Select **Settings** and press **Parent details**
- 4 If you're new to Doodle, choose **Create parent account**. If you already have a Doodle account, click on **Link existing account**.
- 5 Enter your details to link your email address to your child's account



## How to create and/or link a parent account via the Parent Dashboard

- 1 Visit [parents.doodlelearning.com](https://parents.doodlelearning.com)
- 2 If you're new to Doodle, click on **Create account** and follow the instructions. After you've done this, log in to [parents.doodlelearning.com](https://parents.doodlelearning.com). If you already have a parent account, log in to [parents.doodlelearning.com](https://parents.doodlelearning.com).
- 3 Once you've logged in, hover over **My account** and select **Child details**
- 4 Click on **Link to my child's school account** and enter the username and password provided by your child's school. **If you're not sure what these are, please contact your child's school rather than creating a new account for them.**

### Good luck, and happy Doodling!

\*The Challenge available will depend on your school's Doodle subscription. If you'd like to join both Challenges but your school does not subscribe to DoodleMaths or DoodleEnglish, a home subscription can be taken out in the subject you're not subscribed to. To receive 2 FREE weeks of a home subscription, please visit [doodlelearning.com/challenge-offer](https://doodlelearning.com/challenge-offer).

**It's Back!**

# FOOD FAYRE

Friday 4<sup>th</sup> July

3.15 – 4.45 pm

Tickets will be available to purchase on the door - cash only (please bring change if possible) at the start of the event (3.15pm).





# BEE FEST

Westbury Arts Centre  
Westbury Arts Centre,  
Foxcove Road, Shenley Wood,  
MK5 6AA



/// forever able poster insects

## WESTBURY BEE FESTIVAL

26 -27 July 2025

11:00 - 16:00

- Brilliant bee talks
- Wax candle making
- Workshops and activities
- Local honey & bee gifts for sale
- Live observation hive - safely see the bees up close





# FREE SEND PARENT SUPPORT GROUP



**Transitions - Why moving from one thing to another is so hard for SEND children - and how you can help.**

- Q & A from one of our expert clinicians
- Tea & Coffee
- A chance to connect with other SEND parents

**FREE TO BOOK  
ON EVENT  
BRITE**

**Tuesday 8<sup>th</sup> July**

**12.30- 2.00**

**Neurodiversity Hub,  
Midsummer Place, Milton  
Keynes, MK9 3GB**



# WATLING VALLEY HOLIDAY CLUB 2025

28 July - 1 August

9am to 12 noon

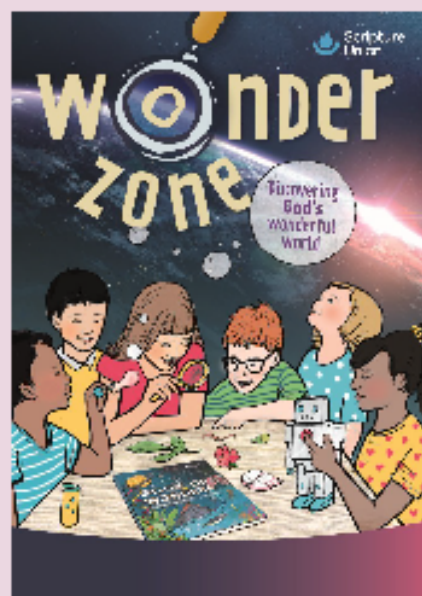
Christ the Sower School

Are you in primary school aged between 4 and 11? Why not join us for this year's spectacular Holiday Club - Wonder Zone?

Throughout the week we will be discovering the wonder of God's world through exciting experiments, inspirational stories as well as the usual mix of games, messy challenges and the Daily Soap! We will explore how science and faith can go hand in hand to help us understand the world we live in.

With craft, puzzles, stories, art, and even a bit of drama; you are in for lots of fun and games!

- £30 for the first child
- £25 for each additional child from the same household
- T-Shirts £8 (optional)



Access the booking form via the QR code  
or by visiting our website:  
[www.watlingvalley.org.uk](http://www.watlingvalley.org.uk)

All volunteers are DBS checked and have  
undertaken safeguarding training



# GIVE RUGBY A TRY

Experience the excitement of playing rugby in a friendly and supportive environment.

Great for beginners, starting from the age of 5 - 16! Boys & girls. **No experience necessary.**

**29TH JUNE**  
10 - 12 P.M.

- ✓ Learn new skills
- ✓ Meet new friends
- ✓ Fun activities
- ✓ A new love for rugby!



## BBQ & REFRESHMENTS

**MILTON KEYNES RUFC**

The Valley, Bowland Dr,  
Emerson Valley, Milton Keynes MK4 2DN

**OUR CITY.YOUR CLUB**

**FREE**  
TO ATTEND

More Information  
[enquiries@mkrufc.com](mailto:enquiries@mkrufc.com)



# It all starts with...



**We all play at:**

**Tattenhoe Pavilion**

**Session dates:**

**Tuesday 3rd June to Tuesday 15th July**

**Session timings:**

**17:30 - 18:15**

**Contact:**

**nauman.javaid@bucksccricket.co.uk**



Sign up today at  
**allstarscricket.co.uk**



 **SIGN UP**





And Natural loose parts such as:

Branches and sticks

Fruit trees

Grass Plants

Leaves

Logs

Mud

Pea gravel

Peat

Pinecones

Play bark/woodchip

Sand (washed dredged not 'sharp')

Sea pebbles

Shells

Varied aggregates, slate, flint, clay

Wood off-cuts

If you have or can help with any of these, please put them in the **OPAL DONATION STATION** in the main foyer, or speak to the school office.

Fabricated loose parts e.g.

Astro turf off-cuts

Boards, old cabinet doors, panels

Bread, milk, bottle and grocery crates

Briefcases

Buggies, pushchairs

Cable drums

Carpet samples/squares

Fabrics – all shapes and sizes

Foam pipe covers and noodles

Guttering

Hoses

Keyboards

Metal pots, pans, trays etc, especially catering sizes

Nets: fishing, cargo, football

Office removal crates Tea Crates

Old clothes, jackets, overalls, hats, bags

Old household appliances, hoovers, fax machines, microwaves etc

One-ton dumpy bags

Pallets

Phones

Piping, gas, water and drainage

Planks – decking

Plastic road barriers

Small wheelie bins

Steering wheels

Suitcases

Tarps

Traffic Cones

Tubes of all kinds

Wooden block and off-cuts Carpenters, builders

