

Geography of North America

Year 6

Main Foci: Physical and human features of North America

What should I already know?

There are seven **continents** of the world: North America, South America, Asia, Europe, Antarctica, Africa, Australia.

Milton Keynes is in the United Kingdom: Europe.

South America is made up of twelve **countries**: Argentina, Bolivia, Brazil, Chile, Colombia, Ecuador, Guyana, Paraguay, Peru, Suriname, Uruguay and Venezuela .

Brazil is the largest country in South America. It's **capital city** is Brasília.

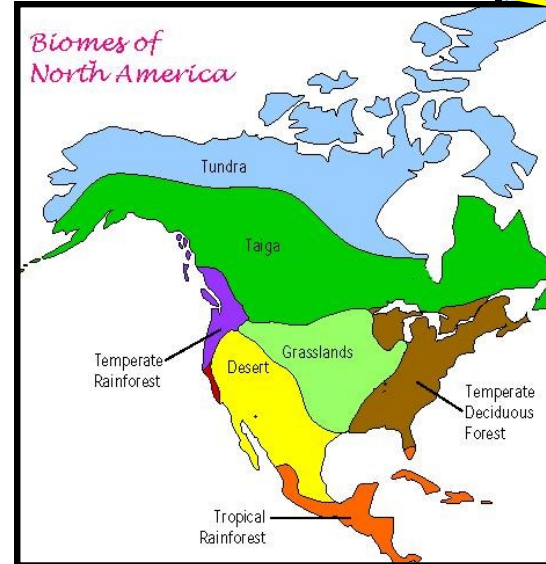
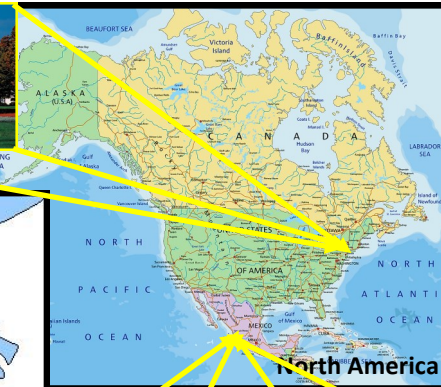
The Amazon river, Andes mountain range and Angel Falls can be found in South America.

South America has eleven different **biomes** due to its varied **physical geography** of mountain ranges, river basins and coastal plains.

Geographical Skills

- Identify and name countries, cities, human and physical characteristics and climate zones of North America.
- Make links to previous learning about biomes and **climate zones** and apply these to North America.
- Describe **landmarks** and explain the reason for differences and similarities.

Washington, D.C. was founded on July 16, 1790. It was completely planned for the national capital and needed to be distinct from the states.

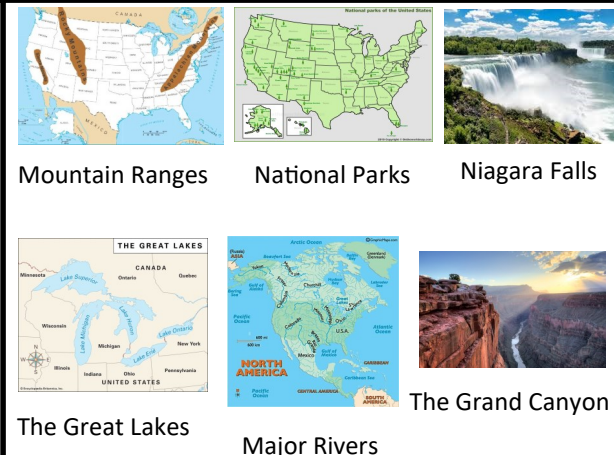


Mexico City is the capital city of Mexico and one of the most important political, cultural, educational and financial centres in North America. Mexico City is the country's largest city as well as its most important political, cultural, educational and financial centre.

Human Features



Physical Features



Glossary

Capital city - a city where a region's government is located.

Biome - a large region with a certain climate and certain types of living things.

Continent - a massive area of land that is separated from others by water or other natural features.

country - an area of land that is controlled by its own government.

human features - features of land that have been impacted by human activity.

physical features - natural features of land.

Landmark - an object or a feature of a landscape or town that has importance or makes a place easily recognisable

Climate zones - areas around the world with specific patterns of weather.

Vegetation belt - an area with distinct plant types, determined by climate, soil, drainage and elevation.

Changing Landscapes

Year 6

Main Foci: Natural Resources and Climate Change

What should I already know?

There are seven **continents** of the world: North America, South America, Asia, Europe, Antarctica, Africa, Australasia.

Milton Keynes is in the United Kingdom: Europe.

A **biome** is a large region with a certain climate and certain types of living things.

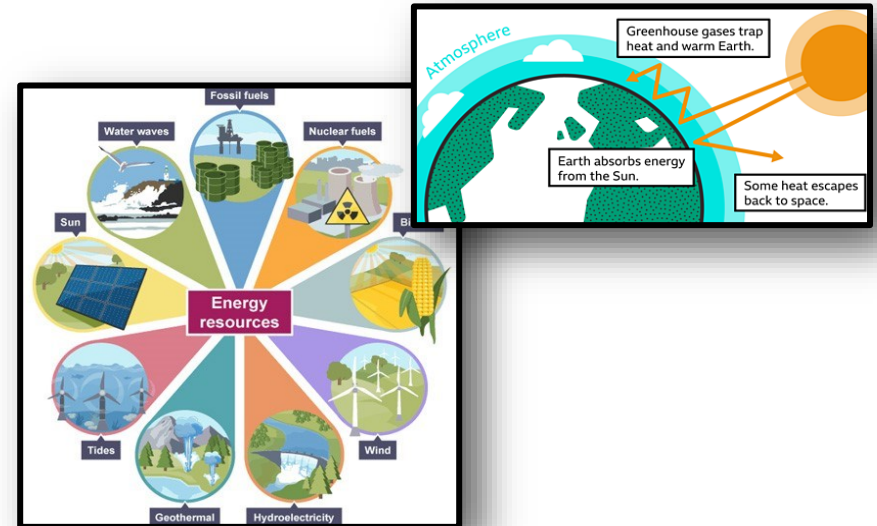
Tundra is the coldest of all the biomes and living things find it challenging to live in this environment.

Climate change is the description of a change in the typical **weather** for a region (such as high and low temperatures and amount of rainfall) over a long period of time.

Climate zones are areas of land with their own climate. When there is change to these climates it can cause **negative and positive** effects.

Geographical Skills

- **Name and locate** some of the **countries** and **cities** of the world and their identifying **human** and **physical** characteristics and **understand** how some of these aspects have **changed over time**.
- **Describe** geographical **diversity** across the world.
- **Describe** how countries and geographical regions are **interconnected** and **interdependent**.



Vocabulary

Biome - a large region with a certain climate and certain types of living things.

human features - features of land that have been impacted by human activity.

physical features - natural features of land.

Climate zones - areas around the world with specific patterns of weather.

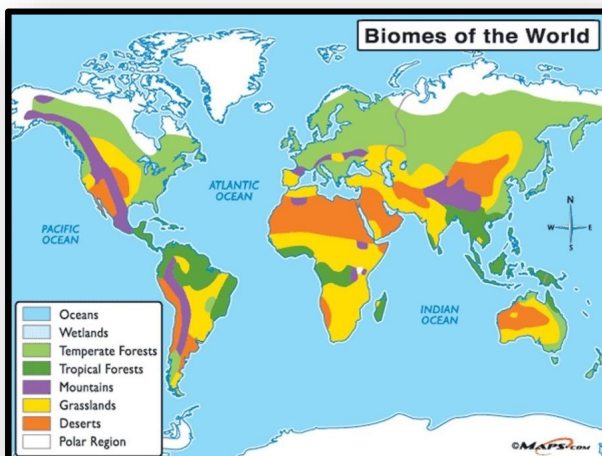
Global warming - the increase in Earth's average temperature over a long period of time

Greenhouse effect - a process that occurs when gases in Earth's atmosphere trap the Sun's heat.

Natural resources - Anything that is found in nature that can be used by humans

Renewable energy - made from resources that nature will replace

Deforestation - the clearing, or cutting down, of forests.



Local Area Study

Year 6

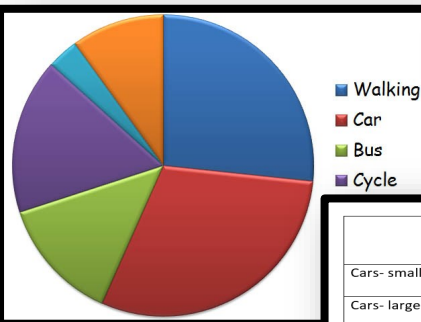
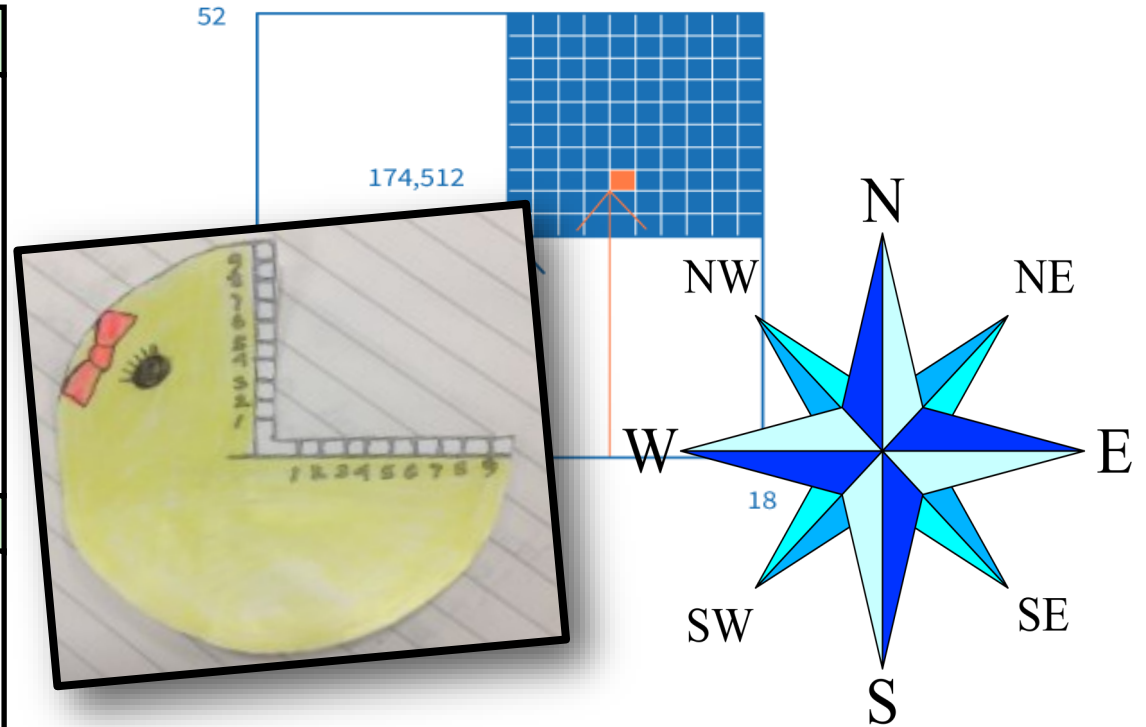
Main Foci: Shenley Brook End

What should I already know?

- The 4 **compass points** are **North, South, East and West**.
- **Human features** are man made; **physical features** are naturally made.
- Some human features of the **UK** include: Big Ben, The Angel of the North, Edinburgh Castle and Wembley Stadium.
- Some physical features of the UK include: Ben Nevis, The Forest of Dean, Durdle Door and Lake Windermere.
- A **map** is a **symbolic representation** of selected **characteristics** of a

Geographical Skills

- Make **observations**, **measure** accurately and **record** carefully
- Use collected **sample data** of **human and physical geography** to make observations and **reach conclusions**.
- Use a range of geographical resources to give **detailed descriptions** and **opinions** of the **characteristic** features of a location.



Tally	Frequency
	2
	8
	11

	Conversion to number per hour - show your workings.	No. per hour
Cars- small		
Cars- large		
Buses		
Trucks		
Bikes		
Other (note details)		

Vocabulary

Analysis - the process of breaking a complex topic or substance into smaller parts to gain a better understanding of it.

Eight Compass Points - make your compass more accurate by adding more points to it. By drawing a line in between each of the cardinal points, you can create an eight-point compass.

Fieldwork - the process of observing and collecting data about people, cultures, and natural environments .

Grid reference - location on a map, which is found using the northing and easting numbered lines.

Local Area Study - the study of both physical and human aspects of our immediate environment

OS Map - mapping agency for Great Britain. It creates up-to-date paper and digital maps

OS Map Symbols -small pictures that stand for different features on a map.