

Hot and Cold Countries

Year 1

Main Foci: Features of hot and cold countries

What should I already know?

- I live in **England**
- England is in the **United Kingdom** which is made up of four **countries**: England, Wales, Scotland and Northern Ireland
- A **physical** feature is something made **naturally**, a **human** feature is made by **people**
- The **weather** is what is happening outside
- It can be **hot** or **cold**
- It may **snow** when it is cold
- **Rain** falls from the **clouds**

Geographical Skills

- Use world maps, atlases and globes to **identify** the **United Kingdom** and its **countries**.
- Ask and answer **geographical questions** (such as: What is this place like? What or who will I see in this place? What do people do in this place?).
- Identify **seasonal** and **daily weather patterns** in the United Kingdom and the location of **hot** and **cold** areas of the world in relation to the **Equator** and the **North** and **South Poles**.

Features of Hot and Cold Locations

Hot Locations

Human Features



Physical Features

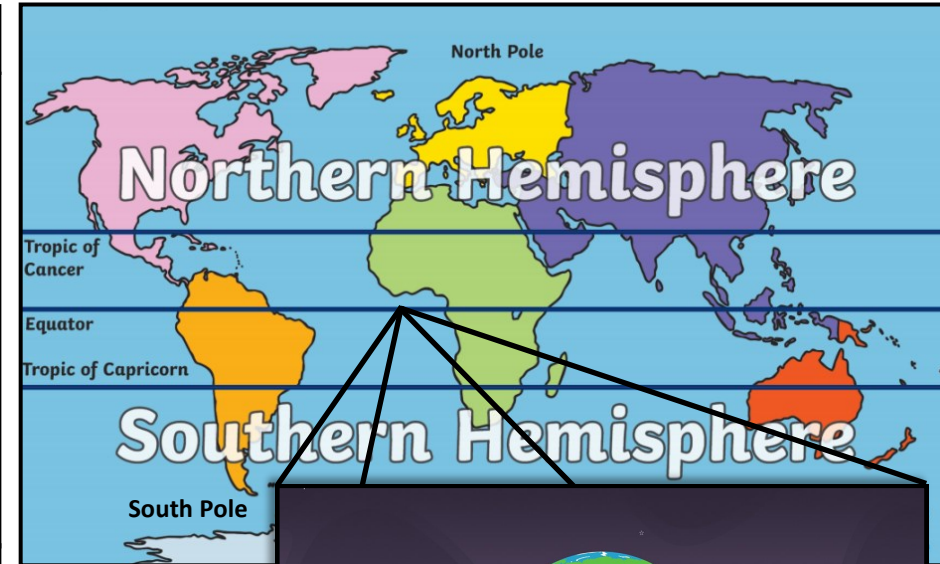


Cold Locations

Human Features



Physical Features



Glossary

physical features - natural features of land.

human features - anything made by people.

weather - a description of what the outside conditions are like in a particular place.

season - quarterly division of the year according to general weather patterns.

Equator - an imaginary line around the Earth that goes exactly midway between the North Pole and the South Pole.

North Pole—the fixed point that forms the axis on which the Earth spins.

South Pole - the southern end of Earth's axis.

hemisphere - half of a sphere, or ball.

Geography of the United Kingdom

Year 1

Main Foci: UK capitals and weather

Vocabulary

city - a large town. London is a city.

capital city - a city or town where the central government of a country is.

sea - a body of salt water (not as large as an ocean) and often nearly surrounded by land.

country - an area of land that is controlled by its own government.

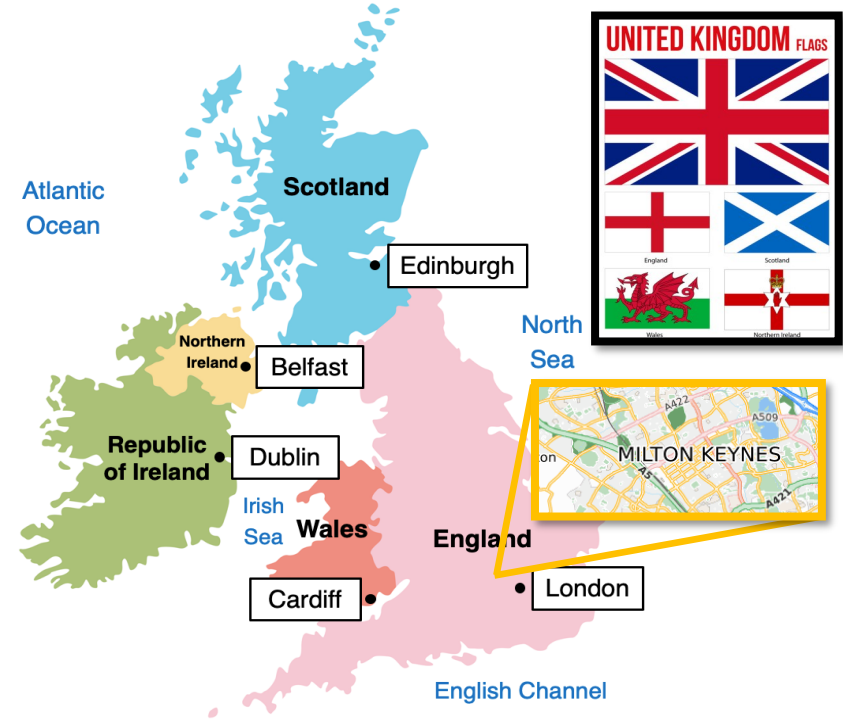
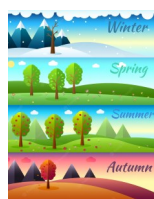
landmark - an object or a feature of a landscape or town that has importance

physical features - natural features of land.

weather - a description of what the outside



landscape or town



What should I already know?

- I live in **Milton Keynes**
- Milton Keynes has lots of houses, roads and parks

The **weather** is what is happening outside

- It can be **hot** or **cold**
- It may **snow** when it is cold
- Rain** falls from the **clouds**
- The weather changes in each **season**
- There are four seasons: **winter, spring, summer, autumn**

Road Map Skill

- I can locate the UK's countries and capital cities
- I can identify human and physical features



Characteristics of the UK

| England | | | Wales | | |
|--------------|-----------|-----------|------------------|-------------|---------------|
| | | | | | |
| White Cliffs | The River | Big Ben | Cardiff Castle | Mount Snow- | The River |
| Scotland | | | Northern Ireland | | |
| | | | | | |
| Ben Nevis | Loch Ness | Edinburgh | Lough Neagh | Giant's | Titanic Muse- |

World Maps

Year 1

Main Foci: Continents and oceans

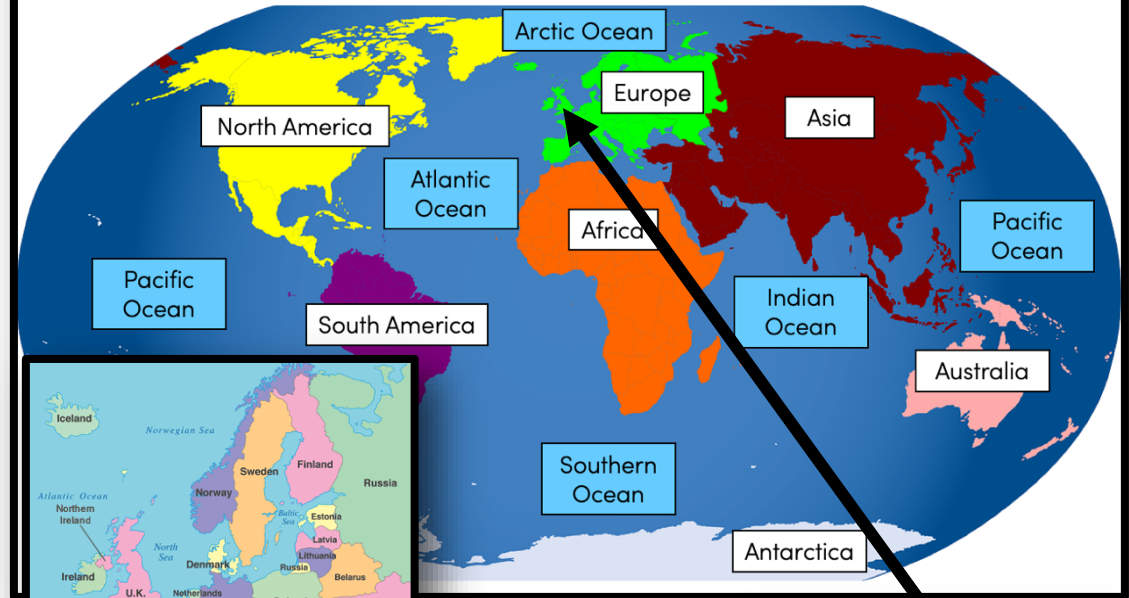
What should I already know?

- The **weather** is what happens outside.
- Which countries are **hot** and which are **cold**.
- The **equator** runs around the **centre** of the world; the closer a country is to the equator, the hotter the weather is.
- The United Kingdom is made up of four **countries**: **England**, **Scotland**, **Northern Ireland** and **Wales**.
- **Milton Keynes** is in England.
- The **capital** of England is **London**.
- The other capitals of the UK are: **Edinburgh** (Scotland), **Belfast** (Northern Ireland) and **Cardiff** (Wales).

Geographical Skills

- Name and locate the world's **seven continents** and **five oceans**.
- Use **maps** to **identify** locations including **continents** and **oceans**

World Continents and Oceans



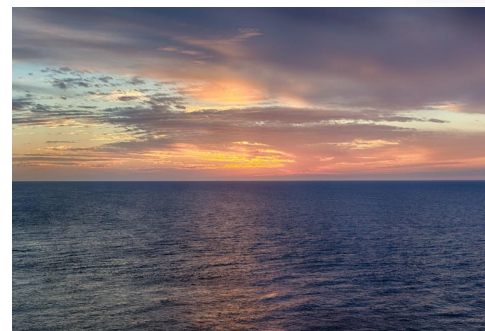
Countries in Europe



Ocean



Sea



Vocabulary

- continent** - a large solid area of land.
- country** - land that is controlled by a single government
- ocean** - a huge body of salt water.
- sea**—a smaller body of salt water.
- weather** - a description of what the outside conditions are like in a particular