

apple



banana



orange



pear



strawberry



lemon



tangerine



lime



grapes



blueberry



mango



plum



pineapple



avocado



raspberry





Knowledge Organiser Y1 Fruit Salad

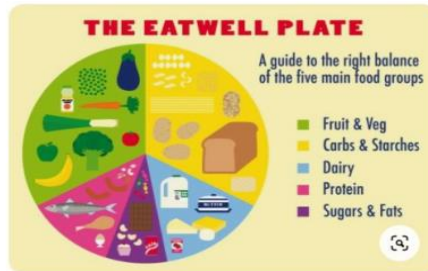


Before	Now	Next
	Y1 Fruit Salad	Y2 Sandwiches and Cookies



Knowledge

- Understand where a range of fruit and vegetables come from.
- Understand and use principles of a varied diet to prepare dishes.
- How fruits and vegetables are part of the 'Eatwell Plate'
- Know and use technical and sensory vocabulary listed.



Vocabulary

Fruit	Plant or trees' edible seed with envelope.
Salad	A cold dish of fresh vegetable or fruit.
Carbohydrate	Foods that are broken down into simple sugars that give us energy.
Nutrients	All the things in food that the body needs to be healthy.
Pith	The soft white lining inside fruit such as oranges.
Flesh	The soft inside part of the fruit or vegetable.
Skin	Protective covering of the fruit.
Pip	A small hard seed in a fruit.
Prepare	Make something ready for use.
Grater	A tool with a rough surface to cut food into very small pieces.
Peeler	A device to remove the skin or outer layer of fruits or vegetables.

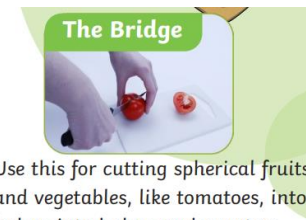
CUTTING TECHNIQUES



Use this for slicing or dicing.



Try this one if you find the claw grip difficult.



Use this for cutting spherical fruits and vegetables, like tomatoes, into halves into halves and quarters.

Health and Safety

Remove jewellery and tie back long hair.



Long hair must be tied back

Wear an apron and roll up your sleeves.



Wear protective apron

Wash your hands carefully with soap and hot water. For 20 seconds.



Wash your hands before handling food

Use equipment safely and with an adult supervising



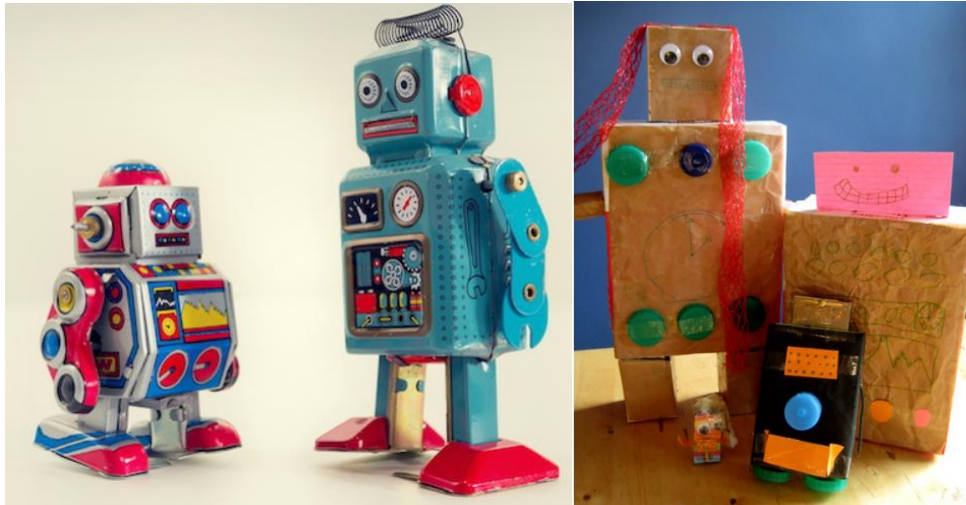
Always clean up properly when you have finished.



Knowledge Organiser Y1 Robot model making



Before	Now	Next
	Y1 Robot making	Y2 Fire Engines



Challenge yourself!!

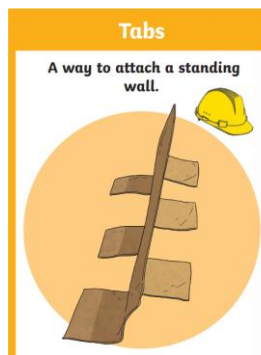
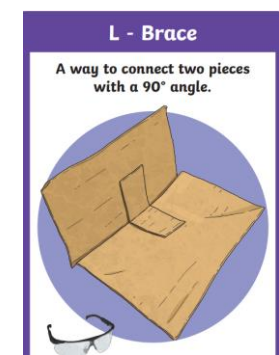
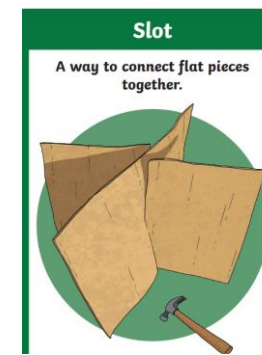
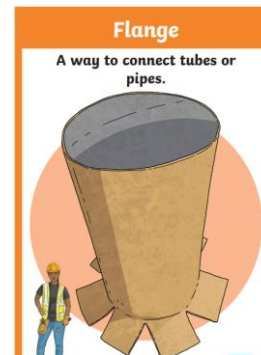
Can you use any joins or mechanisms to give your robot moving parts?

Split pins, sliders, levers or wheels – for example.



Make sure you use all equipment carefully and safely – listen carefully to the advice and guidance your adults give you.

STEM attachment techniques



Vocabulary

Junk modelling	Creating new and exciting things from discarded items.
Model	A small, accurate copy of a thing.
Robot	A machine to created to perform a series of actions.
Plan	A set of actions to achieve something.
Design	To plan for a goal or purpose.
Flange	See - STEM attachment techniques
Slot	See - STEM attachment techniques
L-brace	See - STEM attachment techniques
Tabs	See - STEM attachment techniques
Fold	See - STEM attachment techniques
Tie	See - STEM attachment techniques