

LONG MEADOW SCHOOL

PUPIL WELLBEING POLICY



Date of last review:	January 2023
Date of next review:	January 2025
Type of policy:	Non-Statutory
Frequency of review:	Every 2 years
Governor committee:	Curriculum Committee

Contents

1. Policy statement	2
2. Scope	2
3. Policy aims	2
4. Legal basis	3
5. Roles and responsibilities	3
6. Procedure to follow in a case of acute mental health crisis	4
7. Warning signs	5
8. Managing disclosures	5
9. Confidentiality.....	5
10. Supporting pupils	6
11. Supporting and collaborating with parents and carers.....	7
12. Supporting peers	8
13. Signposting	8
14. Whole school approach to promoting mental health awareness	8
15. Training	9
16. Support for staff.....	9
17. Monitoring arrangements	9

1. Policy statement

At Long Meadow School, we are committed to supporting the mental health and wellbeing of pupils, parents, carers, staff and other stakeholders.

Mental Health is a state of well-being in which every individual realises his or her own potential, can cope with the normal stresses of life, can work productively and fruitfully and is able to make a contribution to his or her community.

(World Health Organisation)

At our school, we aim to promote positive mental health for every member of our staff and pupil body. We pursue this aim using both universal whole school approaches and specialised, targeted approaches aimed at vulnerable pupils.

In addition to promoting positive mental health, we aim to recognise and respond to mental ill health. In an average classroom three children will be suffering from a diagnosable mental health issue. By developing and implementing practical, relevant and effective mental health policies and procedures we can promote a safe and stable environment for pupils affected both directly and indirectly by mental ill health.

2. Scope

This policy is intended to:

- Provide guidance to school staff on our school's approach to promoting positive mental health and wellbeing across all communities in the school
- Inform pupils and parents about the support that they can expect from the school in respect of supporting mental health and wellbeing

Read this policy in conjunction with:

- SEND policy
- Positive Behaviour policy
- Anti-bullying policy
- Child Protection and Safeguarding policy

3. Policy aims

- Promote positive mental health and wellbeing across the whole school
- Create a culture of wellbeing and inclusion
- Foster a positive atmosphere in school, where pupils feel able to discuss and reflect on their own experiences with mental health openly
- Celebrate all of the ways pupils achieve at our school, both inside and outside the classroom
- Allow pupils to participate in forming our approach to mental health by promoting pupil voice
- Give pupils the opportunity to develop their self-esteem by taking responsibility for themselves and others
- Spread awareness of the varieties of ways mental health issues can manifest
- Support staff to identify and respond to early warning signs of mental health issues
- Provide support to staff working with pupils with mental health issues
- Provide support and access to resources to pupils experiencing mental ill health alongside their peers, their families and the staff who work with them

4. Legal basis

This policy was written with regard to:

- [The Equality Act 2010](#)
- [The Data Protection Act 2018](#)
- Articles 3 and 23 of the [UN Convention on the Rights of the Child](#)

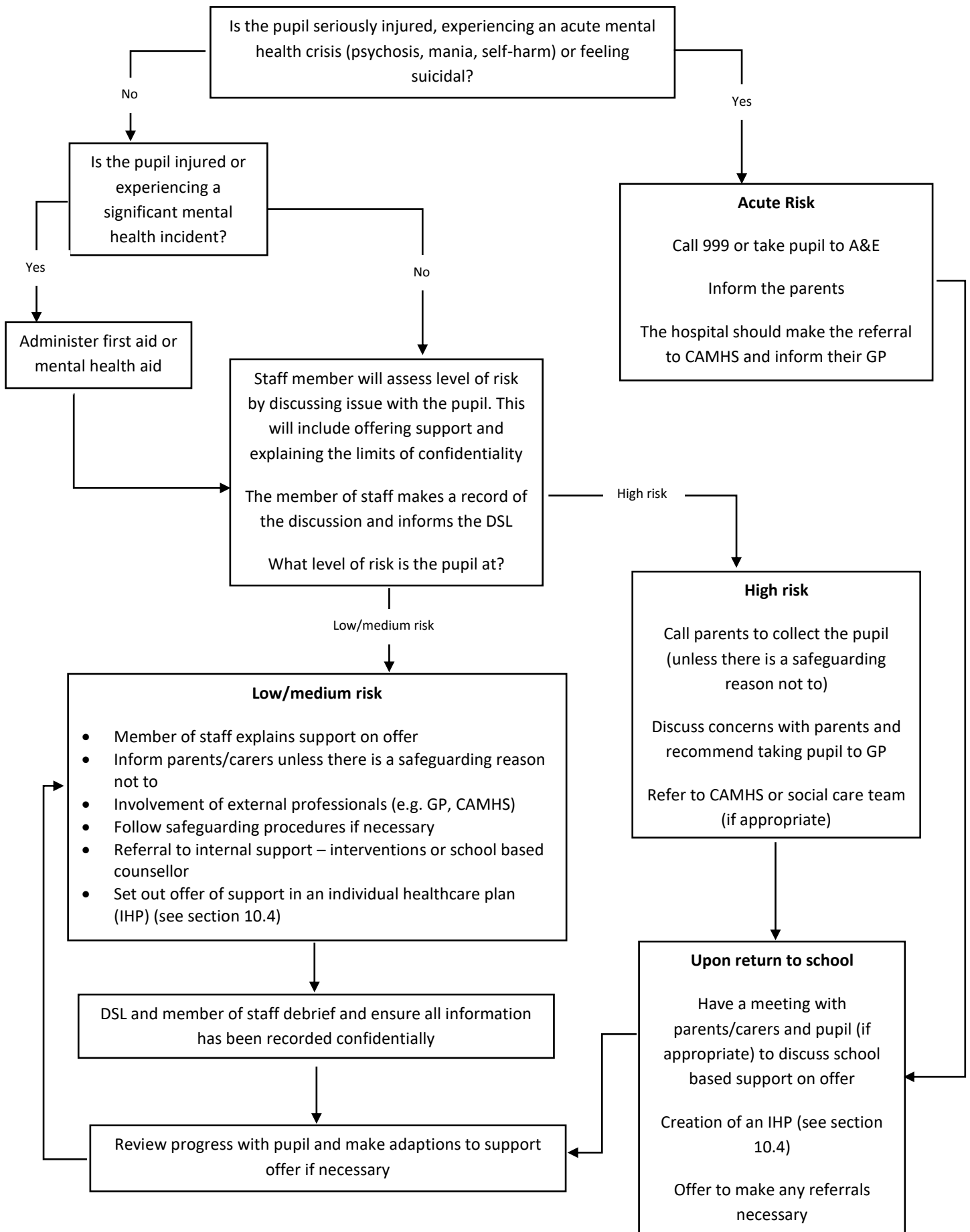
5. Roles and responsibilities

All staff are responsible for promoting positive mental health and wellbeing across the school and for understanding risk factors. If any members of staff are concerned about a pupil's mental health or wellbeing, they should inform one of the Designated Safeguarding Leads, one of whom is the Designated Senior Mental Health Lead.

Certain members of staff have extra duties to lead on mental health and wellbeing in school. These members of staff include:

- Philip Gray – Head Teacher / Designated Safeguarding Lead / Mental Health First Aider
- Emma Kidd – Deputy Head Teacher / Designated Safeguarding Lead / Designated Senior Mental Health Lead
- Kerrie Evans – Assistant Head Teacher / Designated Safeguarding Lead
- Laura Fawcett – Senior Pastoral Lead / Designated Safeguarding Lead / Mental Health First Aider
- Tracy Sanders – Designated Safeguarding Lead / Special Educational Needs Co-ordinator (SENCO)
- Chris Bond – Designated Safeguarding Governor
- Marie Maguire – Designated Mental Health and Wellbeing Governor

6. Procedure to follow in a case of acute mental health crisis



7. Warning signs

All staff will be on the lookout for signs that a pupil's mental health is deteriorating. Some warning signs include:

- Changes in mood or energy level
- Changes in eating or sleeping patterns
- Changes in attitude in lessons or academic attainment
- Changes in level of personal hygiene
- Social isolation
- Poor attendance or punctuality
- Expressing feelings of hopelessness, anxiety, worthlessness or feeling like a failure
- Abuse of drugs or alcohol
- Weight loss or gain
- Secretive behaviour
- Covering parts of the body that they wouldn't have previously
- Refusing to participate in P.E. or being secretive when changing clothes
- Physical pain or nausea with no obvious cause
- Physical injuries that appear to be self-inflicted
- Talking or joking about self-harm or suicide

8. Managing disclosures

If a pupil makes a disclosure about themselves or a peer to a member of staff, staff should remain calm, non-judgmental and reassuring.

Staff will focus on the pupil's emotional and physical safety, rather than trying to find out why they are feeling that way or offering advice.

Staff will always follow the school's safeguarding policy and pass on all concerns to one of the Designated Safeguarding Leads, one of whom is the Designated Senior Mental Health Lead. All disclosures are on CPOMS.

When making a record of a disclosure, staff will include:

- The full name of the member of staff who is making the record
- The full name of the pupil(s) involved
- The date, time and location of the disclosure
- The context in which the disclosure was made
- Any questions asked or support offered by the member of staff

9. Confidentiality

Staff should not promise a pupil that they will keep a disclosure secret, instead they will be upfront about the limits of confidentiality.

A disclosure cannot be kept secret because:

- Being the sole person responsible for a pupil's mental health could have a negative impact on the member of staff's own mental health and wellbeing
- The support put in place for the pupil will be dependent on the member of staff being at school
- Other staff members can share ideas on how to best support the pupil in question

Staff should always share disclosures with at least one appropriate colleague. This will usually one of the Designated Safeguarding Leads, one of whom is the Designated Senior Mental Health Lead.

If information needs to be shared with other members of staff or external professionals, it will be done on a need-to-know basis.

Before sharing information disclosed by a pupil with a third party, the member of staff will discuss it with the pupil and explain:

- Who they will share the information with
- What information they will share
- Why they need to share that information

Parents will be informed unless there is a child protection concern. In this case the Child Protection and Safeguarding policy will be followed.

10. Supporting pupils

10.1 Baseline support for all pupils

As part of the school's commitment to promoting positive mental health and wellbeing for all pupils, the school offers support to all pupils by:

- Raising awareness of mental health during assemblies, PSHE lessons and mental health awareness days/weeks
- Signposting all pupils to sources of online support on the school website
- Having open discussions about mental health during lessons
- Providing pupils with avenues to provide feedback on any elements of the school that is negatively impacting their mental health
- Monitoring of all pupils' mental health through various methods, such as observations, a strengths and difficulties questionnaire
- Appointing a senior mental health lead with a strategic oversight of our whole school approach to mental health and wellbeing
- Offering pastoral support through our Senior Pastoral Leader
- Making classrooms a safe space to discuss mental health and wellbeing through interventions such as:
 - Worry boxes
 - Circle time
 - Mindfulness activities, i.e. colouring, listening to calm music, reading positive quotes and affirmations
- Using managing feeling resources, such as 'The Big Bag of Worries'
- Having a whole school managing emotions approach using 'Zones of Regulation'

10.2 Assessing what further support is needed

If a pupil is identified as having a mental health need, the Senior Pastoral Lead will take a graduated and case-by-case approach to making an assessment and providing tailored support, further to the provision of the baseline support as detailed in section 10.1. The school will offer support in cycles of:

- Assessing what the pupil's mental health needs are
- Creating a plan to provide support
- Taking the actions set out in the plan
- Reviewing the effectiveness of the support offered

10.3 Internal mental health interventions

Where appropriate, a pupil will be offered support that is tailored to their needs as part of the graduated approach detailed above. The support offered at our school includes:

- Having time in The Nest (the room where our Senior Pastoral Lead is based)
- Using specific managing feeling resources, i.e. Mood Stars
- Lego Therapy
- Social skills groups
- Soft start to the day
- Reduced timetable
- Safe spaces that a child can go to during the day to take a break from learning

10.4 Individual healthcare plans (IHPs)

Individual healthcare plans (IHPs) are intended to support pupils with physical and mental health conditions to manage their conditions. They lay out what needs to be done, when and by whom. They should be confidential, but easily accessible to everyone who needs to refer to them.

A pupil will be offered an individual healthcare plan (IHP) if it is deemed necessary by the Head Teacher, on a case by case basis.

IHPs are written in collaboration with the pupil (if appropriate), their parent/carer, and any other relevant professionals.

The pupil's IHP will contain the following details:

- The mental health issue (and its triggers, signs, symptoms and treatments)
- The pupil's needs resulting from the condition
- Specific support for the pupil's educational, social and emotional needs
- The level of support needed
- Who will provide the support
- Who in the school needs to be aware of the child's condition
- What to do in an emergency

10.5 Making external referrals

If a pupil's needs cannot be met by the internal offer the school provides, the school will make, or encourage parents to make, a referral for external support.

A pupil could be referred to:

- GP or paediatrician
- CAMHS
- Mental health charities (e.g. [Samaritans](#), [Mind](#), [Young Minds](#), [Kooth](#))
- Local counselling services
- School nurse
- Educational Psychology services
- Inclusion and Intervention Team
- Children's Social Care

11. Supporting and collaborating with parents and carers

We will work with parents and carers to support pupils' mental health by:

- Asking parents/carers to inform us of any mental health needs their child is experiencing, so we can offer the right support
- Informing parents/carers of mental health concerns that we have about their child

- Engaging with parents/carers to understand their mental health and wellbeing issues, as well as that of their child, and support them accordingly to make sure there is holistic support for them and their child
- Highlighting sources of information and support about mental health and wellbeing on our school website, including the mental health and wellbeing policy
- Liaising with parents/carers to discuss strategies that can help promote positive mental health in their child
- Providing guidance to parents/carers on navigating and accessing relevant local mental health services or other sources of support (e.g. parent forums)
- Keeping parents/carers informed about the mental health topics their child is learning about in PSHE, and share ideas for extending and exploring this learning at home
- Signpost parents to services and charities that may be used and accessed by them to support their own mental health, as well as sharing tips and strategies to promote good mental health, via a weekly newsletter from the Head Teacher
- When informing parents about any mental health concerns we have about their child, we will endeavour to do this face to face.

These meetings can be difficult, so the school will ensure that parents are given time to reflect on what has been discussed, and that lines of communication are kept open at the end of the meeting.

A record of what was discussed, and action plans agreed upon in the meeting will be recorded and added to the pupil's confidential record.

If appropriate, an individual healthcare plan (IHP) will be created in collaboration with parents/carers (see section 10.4).

12. Supporting peers

Watching a friend experience poor mental health can be extremely challenging for pupils. Pupils may also be at risk of learning and developing unhealthy coping mechanisms from each other.

We will offer support to all pupils impacted by mental health directly and indirectly. We will review the support offered on a case-by-case basis. Support might include:

- Strategies they can use to support their friends
- Things they should avoid doing/saying
- Warning signs to look out for
- Signposting to sources of external support

13. Signposting

Sources of support will be displayed around the school, detailed in our weekly newsletter to parents and linked to on the school website, so pupils and parents are aware of how they can get help.

They will be available to provide further information to pupils and parents/carers if they want to learn more about what support is available.

14. Whole school approach to promoting mental health awareness

14.1 Mental health is taught in PSHE

We will follow the [PSHE Association Guidance teaching mental health and emotional wellbeing](#).

Pupils will be taught to:

- Develop healthy coping strategies
- Challenge misconceptions around mental health
- Understand their own emotional state
- Keep themselves safe

For more information, see our PSHE curriculum.

14.2 Creating a positive atmosphere around mental health

Staff will create an open culture around mental health by:

- Discussing mental health with pupils in order to break down stigma
- Encouraging pupils to disclose when they think their mental health is deteriorating

15. Training

All staff will be offered training so they:

- Have a good understanding of what pupils' mental health needs are
- Know how to recognise warning signs of mental ill health
- Know a clear process to follow if they identify a pupil in need of help

16. Support for staff

We recognise that supporting a pupil experiencing poor mental health can be distressing for staff. To combat this we will:

- Treat mental health concerns seriously
- Support staff experiencing poor mental health themselves
- Create a pleasant and supportive work environment

17. Monitoring arrangements

This policy will be reviewed by Emma Kidd, Designated Senior Mental Health Lead, every three years. At every review, the policy will be approved by the Curriculum Committee.